

Floppy Disc Request Form

If you do not have a CD-Rom drive and would like to receive the program and the alternate maps for your model on a 3 1/2" floppy disc, please fax this form to Dynojet at 1-702-399-1431 or call 1-800-992-4993

Bike Model _____

Name _____

Street _____

Town _____

State _____ Zip _____

You can also download the Power Commander software and the latest maps from our web site at :

www.powercommander.com



Dynojet Research
 2191 Mendenhall Drive
 North Las Vegas, NV 89031
 1-800-992-4993



2001-2002 Honda CBR600F4i
 PCIII/PCIIIr



Parts List

1	Power Commander	108-210
1	CD-ROM	152-23000
1	Installation Guide	I108-211

Installation Instructions for

2001 CBR600F4i

These instructions cover the installation for the PCIII and the PCIIIr with ignition.

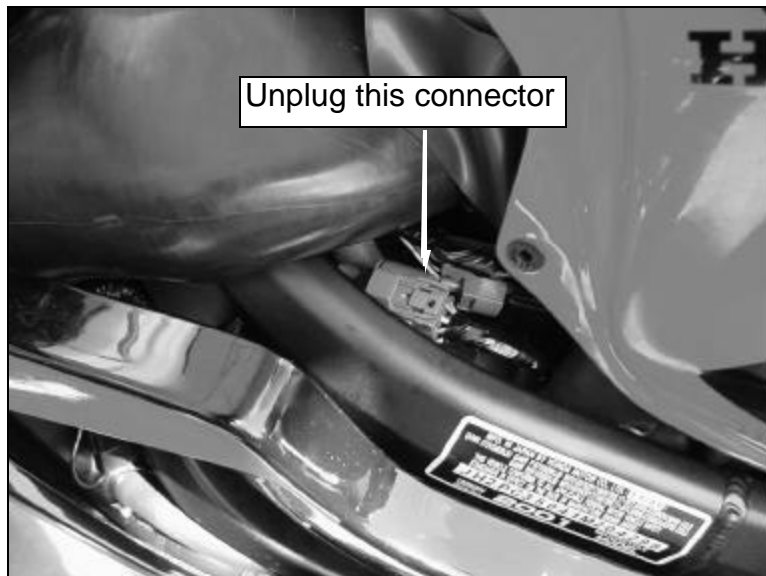
The ignition **MUST** be turned off before installation!!

PLEASE READ ALL THE DIRECTIONS BEFORE STARTING INSTALLATION

- 1 Remove the main seat and the passenger seat.
- 2 Remove the black left hand inner fairing panel by removing the two bolts (this panel surrounds the gauges down to the fuel tank).
- 3 Unplug the connector (Fig. A) which may be located under the rubber flap.

NOTE: There is another connector located under the fuel tank near the rear shock. **DO NOT** plug the PCIII connectors into this area.

Fig.A



Trouble Shooting

If you feel that you are having any problems at all with the Power Commander II, disconnect it from your motorcycle. This will allow the motorcycle to run directly off of the stock ECU.

The lights don't come on when I turn the ignition switch on.

Check to make sure connectors are seated and the kill switch is in the "run" position.

The on-board adjustment buttons do not hold their settings.

Be sure to wait 20-30 seconds after making adjustments before starting or turning off the bike.

Can not upload to or download from the Power Commander II.

Check to see that the serial cable is firmly in place. Verify that ignition switch is on and the kill switch is in the "run" position.

My mouse uses the same serial port.

If your computer has a PS/2 port purchase a DB9 to PS/2 adapter for your mouse.

I get a "verify failed...." message when I upload a map to the Power Commander II.

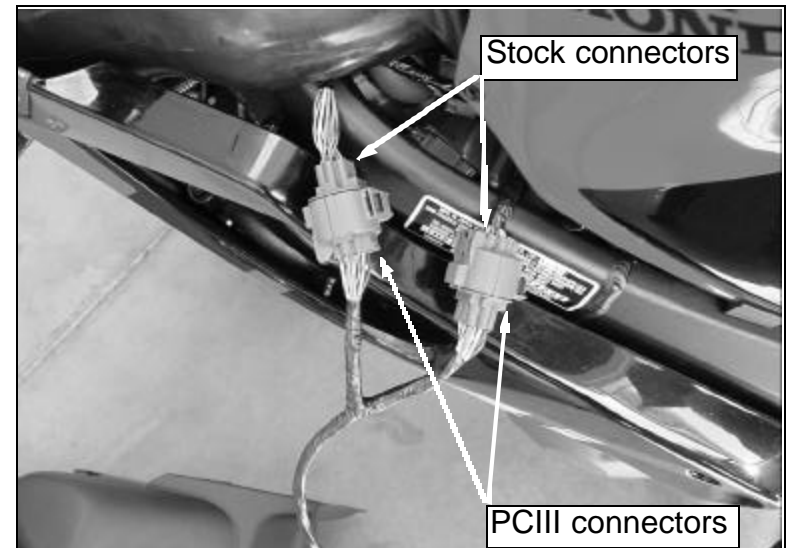
Programs running in the background or fluctuations in supply voltage (from outlet) can sometimes cause this error. In most cases, the information was sent properly to the Power Commander II. Pushing the "upload all" button again should produce a "tables sent and verified" message.

I typed in notes, but they didn't save.

You need to first push the "accept" button in the notes window and then the "save file" button.

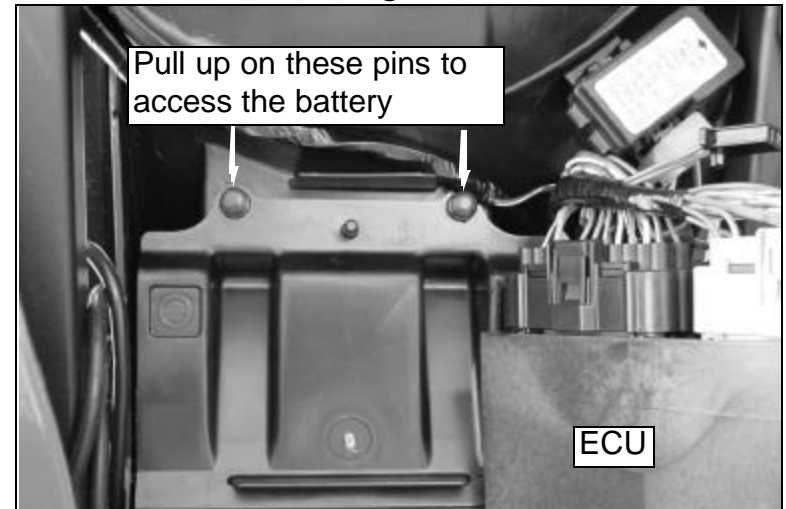
- 4 Plug the connectors from the PCIII in-line of the stock wiring harness (Fig. B).

Fig.B



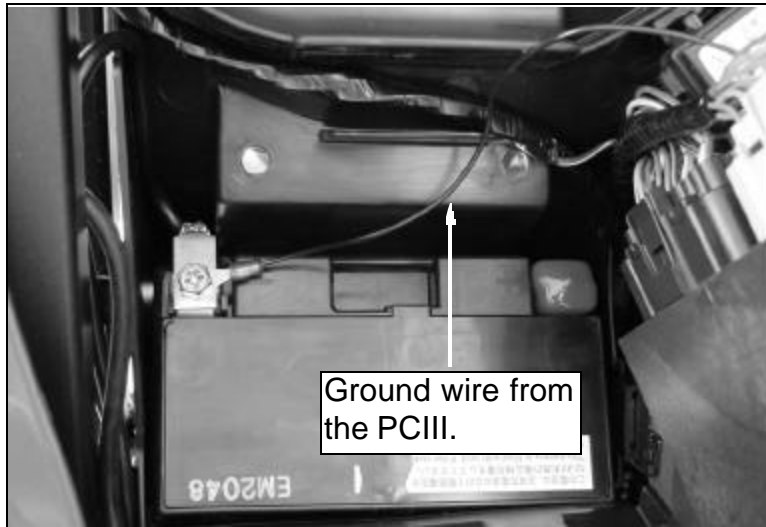
- 5 Route the PCIII wiring along the inside of the frame towards the battery. **NOTE:** The fuel tank may have to be lifted up to do this.
- 6 Locate the negative side of the battery by lifting up the ECU and removing the pins that holds the battery cover down (Fig. C)

Fig.C



- 7 Connect the ground wire from the PCIII to the negative side of the battery (Fig. D).

Fig. D



- 8 Reinstall the battery cover and ECU.
- 9 Install the PCIII in the rear section of the trunk using the supplied velcro (Fig. E). Make sure to clean both surfaces first with alcohol.

Fig. E



Hold these buttons and turn the ignition on to adjust the Power Commander III

Adjusting Your Power Commander

Your Power Commander has been programmed with a base map for your application. You can adjust the base map or install an alternate map using your Computer. Please refer to the supplied CD-Rom for more information.

You can also adjust your Power Commander using the face plate buttons as described below.

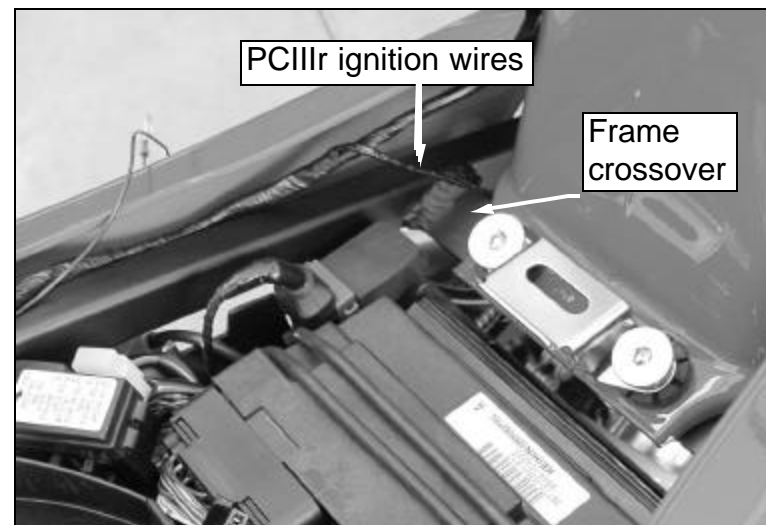
1. With the ignition off, hold down all three buttons on the Power Commander III unit.
2. While still holding down the buttons, turn the ignition on.
3. Release buttons.
4. Select the range you wish to adjust: Low, Med, High, by pushing the corresponding button once.
5. At this point holding that button down will move the lights down (leaning out the mixture).
6. Pushing the button repeatedly will move the light up (richening the mixture).
7. When the two center light are lit up this is the "0" setting.

After making your adjustments wait 20 seconds before starting the bike or turning it off. This allows the settings to be saved to memory. To verify that it is safe to start the bike, move the throttle and watch to see if the lights move up and down the scale. If they do, you may start or turn off the bike.

10 **NOTE: For PCIIIr ONLY.**

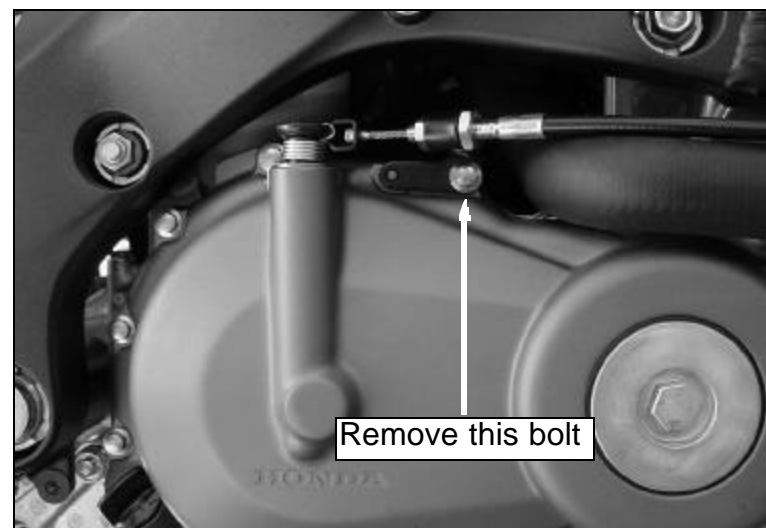
Route the ignition wires from the PCIIIr in front of the frame crossover (Fig. E), under the fuel tank, and over the coolant reserve bottle. Make sure this wire is away from the rear shock and that it will not get pinched.

Fig.E



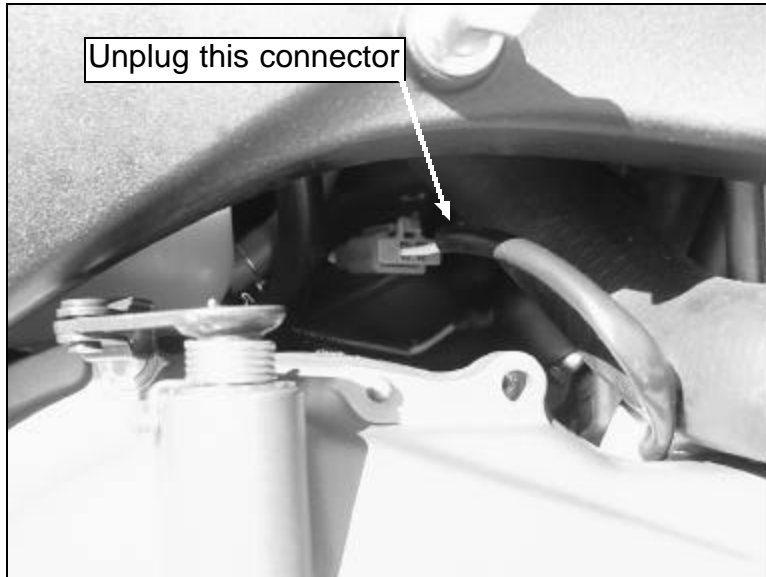
- 11 Remove the right hand fairing. Remove the bolt that holds the clutch cable bracket to the engine case (Fig. F).

Fig. F



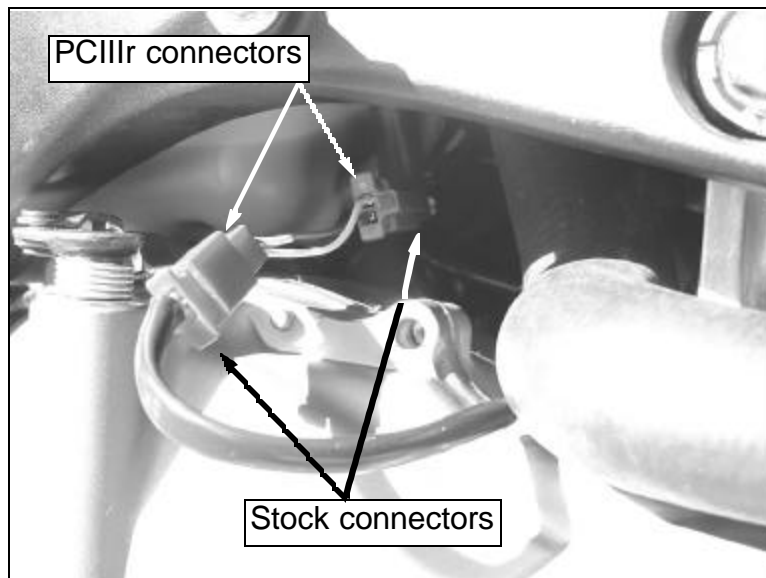
- 12 Locate the red connector from the pulse cover (Fig. G).
Unplug this connector.

Fig. G



- 13 Plug the red connectors from the PCIIIr in-line of the stock wiring harness (Fig. F).

Fig.F



- 14 Make sure all the wires are routed properly and that all bolts are tight.
- 15 Reinstall the bodywork.
- 16 Reinstall the main seat and the passenger seat.